



# What is the Page County Community Foundation?

The Page County Community Foundation is a local, nonprofit, charitable affiliate of the Omaha Community Foundation working in partnership with the Clarinda Foundation and the Greater Shenandoah Foundation.

We were established by local citizens to improve the quality of life in Page County—now and in the future—by making grants to support local nonprofit organizations and projects.

The Page County Community Foundation is here to help people like you make tax deductible gifts in accordance with your wishes.

## How does it work?

The Page County Community Foundation idea is simple. Anyone may use it to give something back to the community.

Individuals, families, businesses, and organizations may choose to create charitable funds or contribute to the Page County Endowment Fund, which helps meet the challenges of changing times in our community in all areas of need: arts & culture, education, environment, health, human services, historical preservation, and many more areas.



**You are invited to help Page County create a legacy for generations to come.**

With your gift you know that it is in good hands and the lasting gift you leave will address the needs of today and the challenges of tomorrow.

You may know precisely which organizations you want to support or you may not. We can help you shape a giving strategy that fits your needs and carries out your charitable intent **forever**.

Let us show you just how easy, flexible, and effective your charitable giving can be. And how you can make a difference by giving something back to the community that helped you get where you are today.

For more information contact:

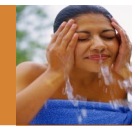
The Page County Community Foundation  
Foundation Office  
302 South 36th Street  
Suite 100  
Omaha, NE 68131  
800-794-3458

or

Dennis N. Nissen  
Iowa Program Officer  
[dennis@omahafoundation.org](mailto:dennis@omahafoundation.org)



**Page County  
Community Foundation**  
*an affiliate of the Omaha Community Foundation*



**For good.**



**For  
Page County.**



**For ever.**



## Charitable Giving— It's an Investment in the Future.



You've worked hard to achieve your goals and to support the causes you believe in. Charitable giving may be a very important part of your life, or it is a desire within you waiting to be touched. You want to know that your gifts will achieve positive results and maximize your tax deductions. You may want to contribute to the most pressing needs of our area or you may want to involve your family by establishing a family advised fund.

*But most of all, you want an easy and flexible way to accomplish your charitable giving objectives.*

Through the Page County Community Foundation you can make a difference for good, for Page County, forever. You can create a fund now or establish it through your estate plan with a variety of options. You can choose to honor someone by contributing in their name to the Page County Community Foundation or any other established fund.

Gifts can be made in any size. No matter the size, your contribution will make a difference in Page County.

## Why should I give through the Page County Community Foundation?

### We Know Our Community.

When you choose to invest in the future of our community you want to work with someone who knows the area. The advisory board members are a cross-section of leaders from our community who guide our work and lend valuable insight, helping your charitable giving achieve maximum results.

### We Help You Achieve Superior Tax Benefits.

Contributions made to the Page County Endowment Fund are eligible for the highest allowable tax deductions under state and federal law.

### We Care About the Future.

By creating a fund or contributing to the Page County Community Foundation, you have the ideal opportunity to make an impact **forever**.

### We Make Administration Easy.

Establishing a fund can be done in less time than it takes to open a bank account. We take care of all the administrative and grant making activities eliminating the need for you to set up a separate institution, formulate policies, file numerous forms, and monitor the status of grant receipts. We save you precious time and money.

### We Share Your Interests.

We are here to help you become connected to the issues you care about most. Your charitable interests and priorities are important to us because committed and caring citizens are so important to our community's well being.

## Interested in an additional 25% tax credit?

A renewed Endow Iowa bill offers taxpayers to apply for a 25% tax credit in addition to the normal charitable income tax deductions for gifts to a permanently endowed fund at a qualified community foundation for the benefit of charitable causes. For more information on how you can receive this tax credit, contact Dennis N. Nissen at the Omaha Community Foundation; 800-794-3458.



**Page County  
Community Foundation**  
*an affiliate of the Omaha Community Foundation*

Your tax-deductible gift to the Community Foundation will help make Page County a better place.

Name: \_\_\_\_\_

Address: \_\_\_\_\_

City/State/Zip: \_\_\_\_\_

Phone: \_\_\_\_\_

Email: \_\_\_\_\_

*Please indicate your interest  
by checking any of the options below.*

- Enclosed is my check for \$ \_\_\_\_\_  
(payable to the either the Greater Shenandoah Foundation Endowment Fund or the Clarinda Foundation Endowment Fund)
- I wish to be contacted about establishing my own named fund.
- I would like more information about other giving options such as stock gifts and real estate. Please contact me.
- My gift is made in honor of:

As a:  memorial gift     anniversary gift  
 holiday gift     birthday gift  
 other \_\_\_\_\_

Please send notice of gift to person/family  
I have chosen to honor:

Name: \_\_\_\_\_

Address: \_\_\_\_\_

City/State/Zip: \_\_\_\_\_

**Please complete this form and return to:**  
Page County Community Foundation  
Administrative Office  
302 South 36th Street, Suite 100  
Omaha, NE 68131



Excellence. Accountability. Impact.™